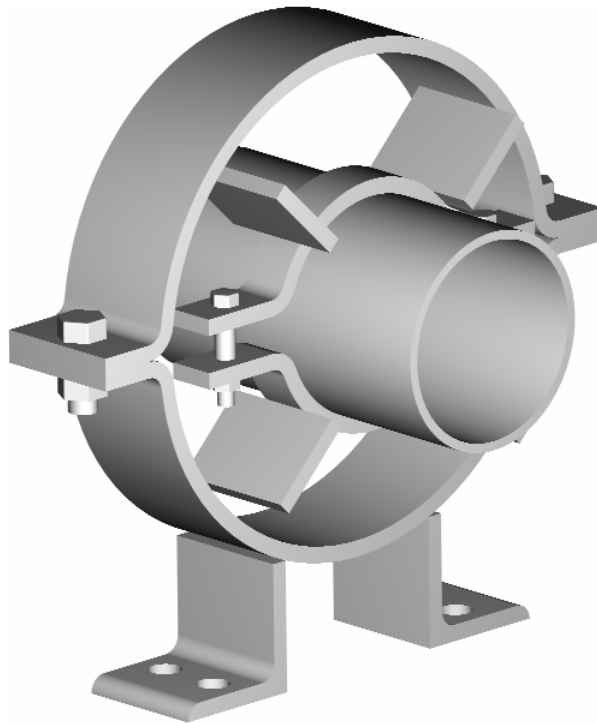


Pipe Guides
Pipe Alignment Guide:
Medium Duty

PART# 680



SIZE RANGE: 1"- 24" inch pipe with 1"- 4" inches of insulation.

MATERIAL: Carbon Steel

FINISH: Black, Galvanized, or coated to customer specifications.

SERVICE: For maintaining alignment of piping through its axial expansion and contraction cycles.

ORDERING: Specify finish, pipe size and insulation thickness.

Pipe Guides
Pipe Alignment Guide:
Heavy Duty

PART# 690

