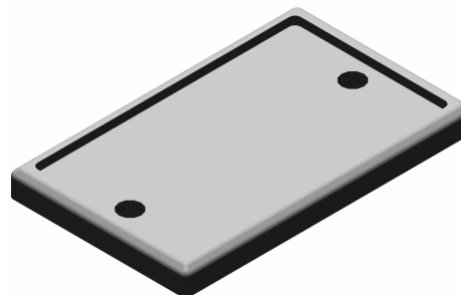
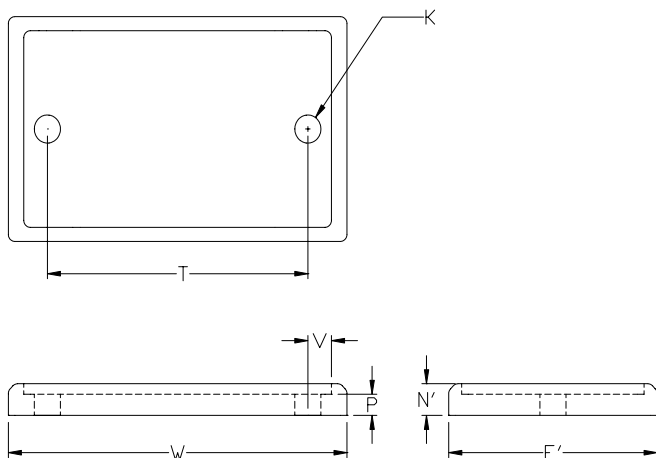


Pipe Roll Base plate

PART# 510



SIZE RANGE: 2" to 42" inch pipe.

MATERIAL: Cast iron plate.

FINISH: Black, Galvanized, or coated to customer specifications.

SERVICE: (When used with Part #500) For support of pipe lines where longitudinal movement resulting from expansion and

contraction may take place and where vertical and lateral adjustment during installation is necessary.

APPROVALS: Complies with Manufacturers Standardization Society SP-69 (Type 46)

ORDERING: Specify pipe roll size in order to receive the correct plate size.

Load (lbs) • Weight (lbs) • Dimensions (inches)

Pipe size	Maximum load	Weight	E'	K	N'	P	T	V	W
2	390	15.3	5 ½	1	1	¾	3 7/16	1	6 7/8
2 1/2									
3									
3 1/2									
4	950	19.3	5 ¾		4 11/16	8 1/8			
6									
8									
10			13/16		7	10 5/8			
12	2100	32.1	6 ¾		1 1/8	¾	9 1/16	13	
14									
16									
18									
20	4980	71.3	8 5/8		1 ¼	7/8	10 1/4	1 3/16	14 5/8
24									
30									
36									
42	12000	304	11	1 5/8	1 ½	17	2¼	23	