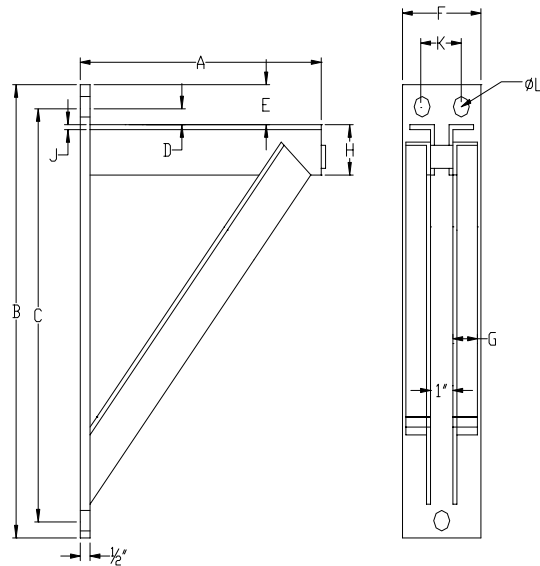
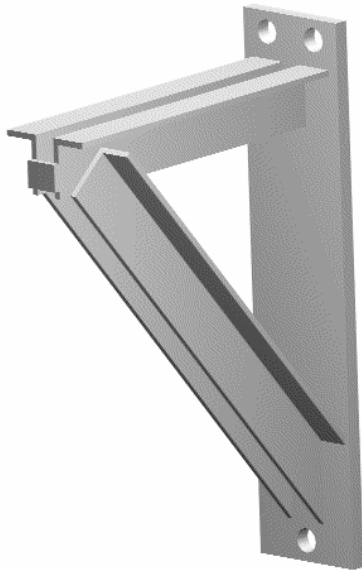


# PART# 420

## Heavy Welded Steel Bracket



**MAXIMUM LOAD:** 3,000 lbs.

**MATERIAL:** Carbon Steel.

**FINISH:** Black, Galvanized, or coated to customer specifications.

**SERVICE:** Recommended for the support of loads up to 3,000 lbs.

**APPROVALS:** Complies with Manufacturers Standardization Society SP-69 (Type 33)

**HOW TO SIZE:** Determine size by dimensions most suitable to the installation (see dimensions of standard brackets below). Special welded steel brackets can be furnished to order.

**ORDERING:** Specify bracket number, part number, name. Order separately: bolts, nuts, and back plates for fastening brackets to wall. Specify size and length of bolts; size, thickness and drilling of plates. Orders for special brackets are to be accompanied by a detailed sketch.

### Load (lbs) • Weight (lbs) • Dimensions (inches)

Bracket No.	Weight	A	Maximum Load	B	C	D	E	F	G	H	J	K	L
0	24.3	12	3000	18	15 1/4	1 3/8	2 3/4	4	1 1/2	2	1/4	-	13/16
1	51.8	18	3000	24	21 3/8	1 7/16	2 3/4	5	2	2	3/8	2 3/4	15/16
2	65.8	24	3000	30	27 1/2	1 1/2	2 3/4	5	2	2 1/2	5/16	2 1/2	11/16
3	82.1	30	3000	36	33 1/4	1 5/8	3	5	2	2 1/2	5/16	2 1/2	11/16
4	140.5	36	3000	42	39	1 1/2	3	6	2 1/2	3 1/2	3/8	3 1/2	11/16
5	166.4	42	3000	50	46	1 1/2	3 1/2	6	2 1/2	3 1/2	3/8	3 1/2	11/16