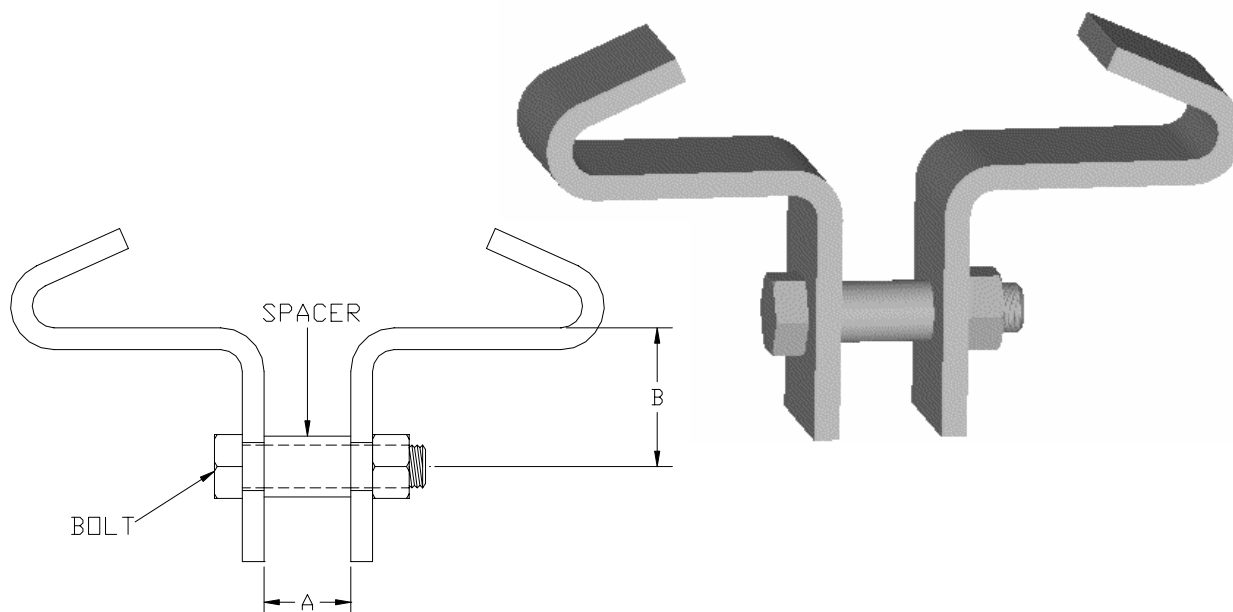


Beam Clamp

Part # 125



SIZE RANGE: 4" to 8" inches.

MATERIAL TYPES: Carbon Steel

FINISH: Black, Galvanized, or coated to customer specifications

COMPONENTS: Two half-clamps, pipe spacer and bolt with nut (assembled).

APPROVALS: Complies with Manufacturers Standardization Society SP-69 (Type 21)

ORDERING: Figure number, width of flange, name, and finish.

Weights (lbs) • Dimensions (inches)

Nominal Flange Width	Max Flange Thickness	Weight (approx) lbs each
4	$\frac{1}{2}$	0.91
5	$\frac{5}{8}$	1.00
6	$\frac{3}{4}$	1.15
7	$\frac{7}{8}$	1.29
8	$\frac{7}{8}$	1.44

Part#	A	B	Bolt Size	Maximum Recommended Load lbs
125	$\frac{1}{2}$	$1 \frac{3}{8}$	$\frac{3}{8}$	1000