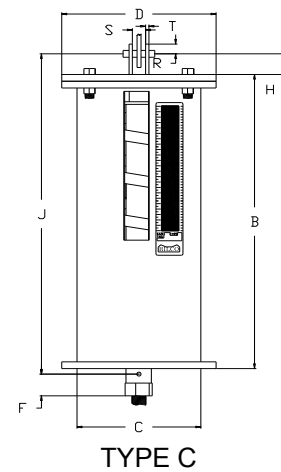
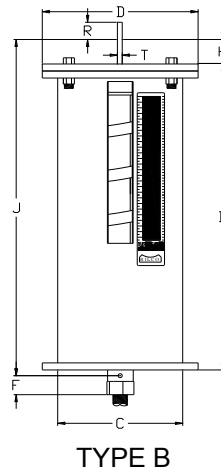
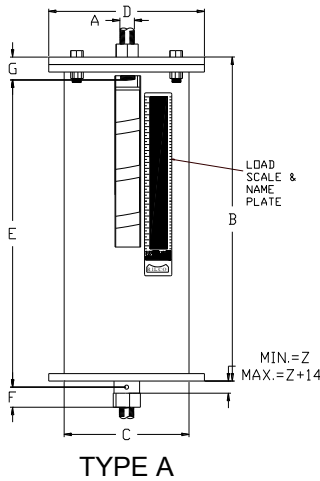


Part # RVS-98



RILCO Variable Double Spring Hanger, the RVS-98, has all of the features of the RVS-268 features and is designed to the same exacting specifications.

Each unit consists of two springs arranged in series within a single casing and a centering guide to assure the permanent alignment of the spring assembly.

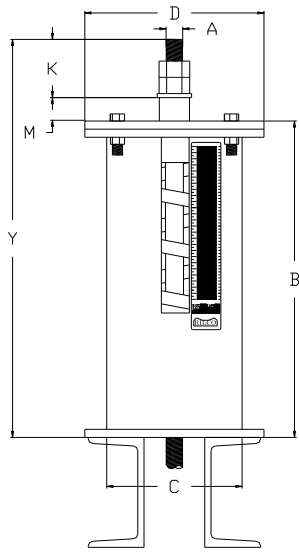
The RVS-98 hanger is offered in seven basic types as shown on this and the following page.

The Variable Selection Chart for sizing and instructions are found at the beginning of this section.

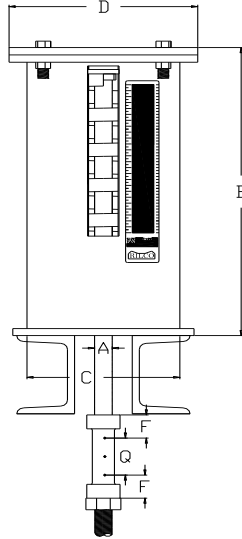
Weights (lbs) * Dimensions (inches)																				
Hanger Size	Rod Size "A"	R.H. Thread Length	Casing		Flange Dia. "D"	Min Thread Engage "E"	"Z"	Rod Take Out By Type				Types B, C					Type D			
			Length "B"	Dia. "C"				A	B,C	E	G	Thread Depth "G"	Lug Hole Size	Pin Hgt "H"	"R"	Clevis Opening "S"	Thk. "T"	Rod Length "V"	Nut Allow. "K"	Hgt Spacer "M"
0	1/2	9	12-5/8	4	5-1/8	15/16	15/16	12-3/16	14-1/8	9	1-1/2	7/16	11/16	1-1/2	1-1/4	7/8	1/4	19-3/8	1-1/4	5-1/2
1	1/2	9	14-3/8	4	5-1/8	15/16	11/16	13-15/16	15-7/8	9	1-1/2	7/16	11/16	1-1/2	1-1/4	7/8	1/4	21-1/8	1-1/4	5-1/2
2	1/2	9	15-7/8	4	5-1/8	15/16	1-1/16	15-3/16	17-1/8	9	1-1/4	7/16	11/16	1-1/2	1-1/4	7/8	1/4	22-1/2	1-1/4	5-1/2
3	1/2	9	14	5-9/16	6-15/16	15/16	9/16	13-7/16	15-3/8	9	1-7/8	7/16	11/16	1-1/2	1-1/4	7/8	1/4	20-3/4	1-1/4	5-1/2
4	1/2	9	15-1/4	5-9/16	6-15/16	15/16	1-3/16	15-3/16	17-1/8	9	2-3/8	7/16	11/16	1-1/2	1-1/4	7/8	1/4	22	1-1/4	5-1/2
5	1/2	9	16-5/8	5-9/16	6-15/16	15/16	1-1/16	15-15/16	17-7/8	9	1-3/4	7/16	11/16	1-1/2	1-1/4	7/8	1/4	22-3/8	1-1/4	5-1/2
6	5/8	9	16-11/16	6-5/8	8-3/8	15/16	13/16	15-15/16	18-1/16	9	1-7/8	5/8	13/16	1-1/2	1-1/4	1-1/16	1/4	23-11/16	1-1/2	5-1/2
7	5/8	9	18-5/8	6-5/8	8-3/8	15/16	1-1/16	18-3/16	20-5/16	9	2-3/16	5/8	13/16	1-1/2	1-1/4	1-1/16	1/4	25-5/8	1-1/2	5-1/2
8	5/8	9	19-9/16	6-5/8	8-3/8	15/16	13/16	18-11/16	20-13/16	9	1-3/4	5/8	13/16	1-1/2	1-1/4	1-1/16	1/4	26-9/16	1-1/2	5-1/2
9	3/4	9	20-3/16	8-5/8	10-3/4	1-1/4	1-1/8	18-7/8	21-3/8	9	2-11/16	1	15/16	1-1/2	1-1/4	1-1/4	3/8	27-7/16	1-3/4	5-1/2
10	3/4	9	22-5/8	8-5/8	10-3/4	1-1/4	1-3/8	21-3/8	23-7/8	9	2-3/4	1	15/16	1-1/2	1-1/4	1-1/4	3/8	29-7/8	1-3/4	5-1/2
11	3/4	10	18-1/4	8-5/8	10-3/4	1-1/4	1-3/16	16-7/8	19-3/8	12	2-5/8	1	15/16	1-1/2	1-1/4	1-1/4	3/8	25-1/2	1-3/4	5-1/2
12	1	10	19-1/2	8-5/8	10-3/4	1-1/4	7/8	17-7/8	20-7/8	12	3-3/8	1	1-1/4	2	1-1/2	1-5/8	1/2	27-1/4	2-1/4	5-1/2
13	1	10	24-3/4	8-5/8	10-3/4	1-1/4	1	23-1/4	26-1/4	12	3-1/2	1	1/4	2	1-1/2	1-5/8	1/2	32-3/8	2-1/4	5-1/2
14	1-1/4	10	24-7/8	8-5/8	10-3/4	1-1/4	3/4	22-1/8	27-1/8	12	3-1/4	1	1-1/2	3	2	2	5/8	33-3/8	3	5-1/2
15	1-1/4	10	24-7/8	8-5/8	10-3/4	1-1/4	3/4	23-1/8	27-1/8	12	3-1/4	1	1-1/2	3	2	2	5/8	33-3/4	3	5-1/2
16	1-1/2	11	29-7/8	8-5/8	11-3/8	1-15/16	2	28-9/16	32-15/16	7	4-1/16	1-3/8	1-3/4	3	2-1/2	2-3/8	3/4	38-7/8	3-1/2	5-1/2
17	1-3/4	12	34	8-5/8	11-3/8	1-15/16	2	32-13/16	37-3/16	7	4-3/16	1-3/8	2	3	2-1/2	2-5/8	3/4	43-1/2	4	5-1/2
18	2	12	33-1/4	12-3/4	15-7/8	2-3/4	2-1/2	31-1/8	37-3/16	7	4-1/8	2-1/4	2-3/8	4	3	2-7/8	3/4	43-3/16	4-9/16	5-1/2
19	2-1/4	13	37-3/4	12-3/4	15-7/8	2-3/4	2-9/16	35-1/2	42-1/8	7	4	2-1/4	2-5/8	4-1/2	3	3-1/8	3/4	48-1/8	5	5-1/2
20	2-1/2	14	44-1/4	12-3/4	15-7/8	2-3/4	2-11/16	42-1/8	48-3/4	7	4-1/8	2-1/4	2-7/8	4-1/2	4	3-3/8	1	55-3/16	5-9/16	5-1/2
21	2-3/4	14	49-7/8	12-3/4	16-7/8	3-5/8	2-3/4	5-7/16	52-11/16	7	3-5/16	2-3/4	3-1/8	4-1/2	4	3-5/8	1	50-5/8	6-1/4	5-1/2
22	3	15	62	12-3/4	16-7/8	3-5/8	2-3/4	58-1/8	66-1/8	7	4-1/8	3	3-3/8	5	4	3-7/8	1	73-1/8	6-5/8	5-1/2



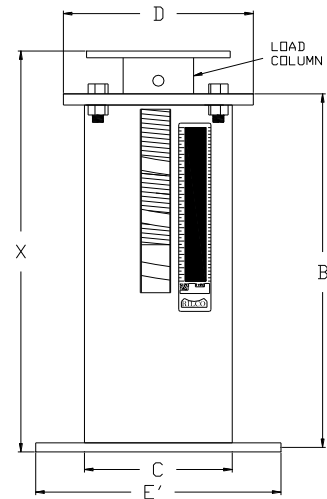
Part # RVS-98



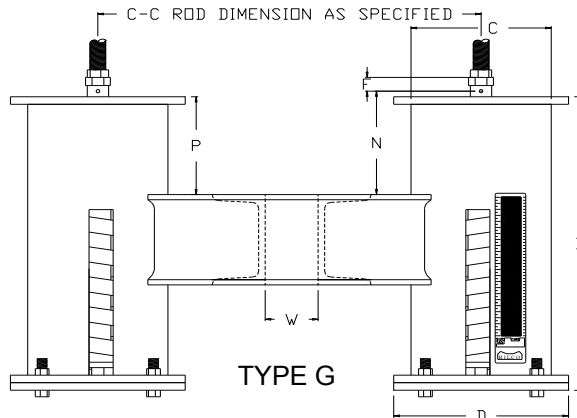
TYPE D



TYPE E



TYPE F



TYPE G

Weights (lbs) \* Dimensions (inches)

Hanger Size	Type F										Type G				Weight			
	E' Bottom Flange		Bottom Flange		Load Col. Dia.	Load Flange		Length X		Channel Size	Max C-C	Space Between Channels-W	P	Type				
	Size Sq.	Bolt Circle		Bolts		Thick	Dia.	Thick	Min					Max	A,B,C	D,E	F	G
		Min	Max															
0	7-1/2	7	8-3/4	5/8	1/4	1.90	3-7/8	3/16	14-1/2	16-3/4	C3 x 4.1	24	5/8	1-1/2	12	12	20	37
1	7-1/2	7	8-3/4	5/8	1/4	1.90	3-7/8	3/16	16-1/4	18-1/2	C3 x 4.1	24	5/8	1-1/2	14	14	21	41
2	7-1/2	7	8-3/4	5/8	1/4	1.90	3-7/8	3/16	17-3/4	20	C3 x 4.1	24	5/8	1-1/2	16	16	23	45
3	7-1/2	7-3/4	8-3/4	3/4	1/4	2.88	5-3/4	3/16	16-5/16	18-11/16	C3 x 4.1	30	3/4	2	22	21	35	55
4	7-1/2	7-3/4	8-3/4	3/4	1/4	2.88	5-3/4	3/16	17-1/16	19-1/4	C3 x 4.1	30	3/4	2	25	24	39	61
5	7-1/2	7-3/4	8-3/4	3/4	1/4	2.88	5-3/4	3/16	18-7/16	20-11/16	C3 x 4.1	30	3/4	2	27	26	41	65
6	9	8	10-7/8	3/4	3/8	3.50	6-3/8	1/4	18-5/8	20-11/16	C3 x 4.1	36	1	2	41	40	62	93
7	9	8	10-7/8	3/4	3/8	3.50	6-3/8	1/4	20-1/2	22-13/16	C3 x 4.1	36	1	2	49	48	72	109
8	9	8	10-7/8	3/4	3/8	3.50	6-3/8	1/4	21-1/8	23-5/16	C3 x 4.1	36	1	2	61	52	75	133
9	13-1/4	10-9/16	16-1/2	3/4	1/2	4.50	8-3/8	1/2	21-1/2	23-11/16	C4 x 5.4	36	1-1/4	3	97	94	136	207
10	13-1/4	10-9/16	16-1/2	3/4	1/2	4.50	8-3/8	1/2	23-7/8	26-9/16	C4 x 5.4	36	1-1/4	3	114	108	150	241
11	13-1/4	10-9/16	16-1/2	3/4	1/2	4.50	8-3/8	1/2	19-1/2	22-11/16	C4 x 5.4	36	1-1/4	3	96	95	134	209
12	13-1/4	10-9/16	16-1/2	3/4	1/2	4.50	8-3/8	1/2	21-1/8	23-1/2	C5 x 6.7	36	1-1/2	4	108	104	144	223
13	13-1/4	10-9/16	16-1/2	3/4	1/2	4.50	8-3/8	1/2	26-1/8	28-11/16	C5 x 6.7	36	1-1/2	4	144	139	181	305
14	13-1/4	10-9/16	16-1/2	3/4	1/2	4.50	8-3/8	1/2	27-1/8	29-3/16	C5 x 6.7	33	1-1/2	4	153	147	188	323
15	13-1/4	10-9/16	16-1/2	3/4	1/2	4.50	8-3/8	1/2	26	28-3/16	C6 x 10.5	36	1-1/2	4	172	163	201	368
16	13-1/4	10-9/16	16-1/2	3/4	1/2	2.00	8-3/8	1/2	31	33-13/16	C8 x 11.5	36	2-1/8	4	218	202	241	462
17	13-1/4	10-9/16	16-1/2	3/4	1/2	2.00	8-3/8	1/2	35	37-3/4	C8 x 11.5	36	2-1/8	4	273	247	287	572
18	17-1/4	15-3/4	22	3/4	5/8	2.50	12-1/2	1/2	34-1/8	36-5/16	C12 x 20.7	42	2-3/8	4	512	477	550	1056
19	17-1/4	15-3/4	22	3/4	5/8	2.50	12-1/2	1/2	38-1/8	40-5/16	C12 x 20.7	42	2-3/8	4	600	548	624	1231
20	17-1/4	15-3/4	22	3/4	5/8	2.50	12-1/2	1/2	45-7/8	47-7/8	C12 x 20.7	40	2-3/8	4	802	723	807	1633
21	17-1/4	15-3/4	22	3/4	5/8	3.00	12-1/2	1/2	50-1/16	54-3/16	C15 x 33.9	48	3-1/8	4	940	845	872	1965
22	17-1/4	15-3/4	22	3/4	5/8	3.00	12-1/2	1/2	62-1/8	66-5/16	C15 x 33.9	48	3-3/8	4	1240	1140	1184	2566