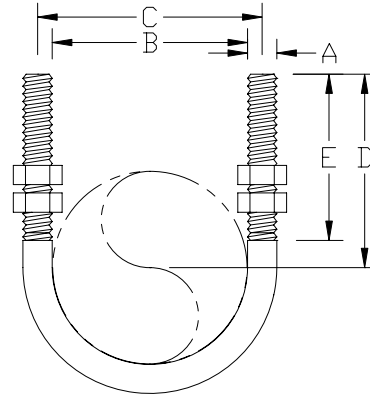
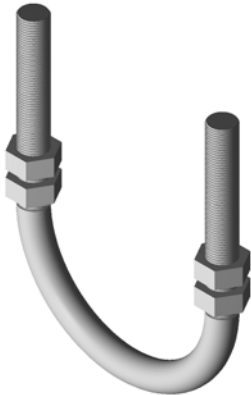


PART# 700

U-Bolt Standard U-Bolt



SIZE RANGE: 1/2"-36" inch pipe.

MATERIAL: Carbon Steel

FINISH: Black, Galvanized, or coated to customer specifications.

SERVICE: For support or guide of heavy loads.

APPROVALS: Complies with Manufacturers Standardization Society SP-69 (Type 24).

ORDERING: Specify part name, number, rod size and pipe size to be supported.

Load (lbs) • Weight (lbs) • Dimensions (inches)

Pipe size	Rod size	Weight	B	C	D	E
1/2	3/8 - 1/4	.11	15/16	1 3/16	2 3/4	2 1/8
3/4		.12	1 1/8	1 3/8		
1		.12	1 3/8	1 5/8		
1 1/4	3/8	.28	1 11/16	2 1/16	2 7/8	2 1/2
1 1/2		.30	2	2 3/8	3	
2		.33	2 7/16	2 13/16	3 1/4	
2 1/2	1/2	.73	2 15/16	3 7/16	3 3/4	3
3		.78	3 9/16	4 1/16	4	
3 1/2		.84	4 1/16	4 9/16	4 1/4	
4		.90	4 9/16	5 1/16	4 1/2	
5		1.0	5 5/8	6 1/8	5	
6	5/8	2.0	6 3/4	7 3/8	6 1/8	3 3/4
8		2.3	8 3/4	9 3/8	7 1/8	
10	3/4	4.9	10 7/8	11 5/8	8 3/8	4
12	7/8	7.7	12 7/8	13 3/4	9 5/8	4 1/4
14		8.3	14 1/8	15	10 1/4	
16		9.2	16 1/8	17	11 1/4	
18		13.5	18 1/8	19 1/8	12 5/8	
20	1	14.6	20 1/8	21 1/8	13 5/8	4 3/4
24		16.9	24 1/8	25 1/8	15 5/8	
28		18.0	28 1/8	29 1/8	17 5/8	
30		19.1	30 1/8	31 1/8	18 5/8	
36		23.2	36 1/8	37 1/8	21 5/8	