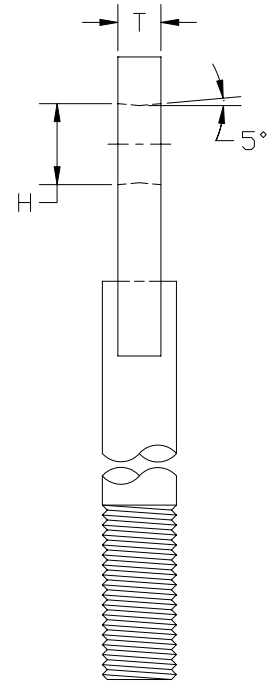
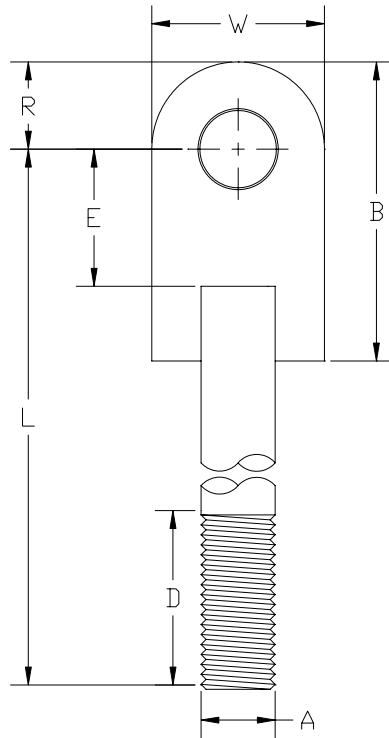
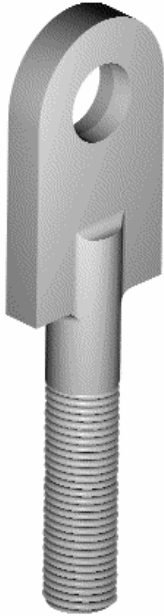


Part # 235

Hanger Rods Rod With Eye End



SIZE RANGE: Rod sizes 2 3/4" to 5" inches.

MATERIAL TYPES: Carbon Steel

FINISH: Black, Galvanized, or coated to customer specifications.

SERVICE: A large diameter rod with eye end for load ratings from 41,580 to 154,000 pounds.

ORDERING: Specify rod size, part number, name, finish and "L" dimension. Indicate if desired thread length is other than Standard.

Loads (lbs) • Weights (lbs) • Dimensions (inches)

Rod Size A	*Maximum Load		♦ Weight Minimum Length	Weight/Ft. Additional Length	B	D	E	H	L (Min)	R	T	W
	650° F	750° F										
2 3/4	49400	38687	35.9	20	9 5/8	12	3 3/4	3 1/8	19	3 5/8	1 1/2	6
3	60100	47066	42.9	24	11	12	4	3 3/8	20	4	1 1/2	6
3 1/4	71900	56307	54.7	28	12 1/4	12	4	3 5/8	21	4 1/4	1 1/2	7
3 1/2	84700	66331	67.3	33	12 1/2	15	4 3/4	3 7/8	24	4 1/2	2	7
3 3/4	98500	77139	80.0	37	13 7/8	15	5	4 1/8	25	4 7/8	2	7 1/2
4	113400	88807	97.0	43	15 1/8	15	5	4 3/8	26	5 1/8	2	8 1/2
4 1/4	129400	101337	127.0	48	16 1/4	18	5 1/4	4 5/8	30	5 1/2	2	9 1/2
4 1/2	146600	114807	131.0	54	16	18	5 3/4	4 7/8	30	5 3/4	2 1/2	8 1/2
4 3/4	164700	128982	154.0	60	17	18	5 3/4	5 1/8	31	6	2 1/2	9 1/2
5	184000	144096	175.0	67	17 7/8	18	6 1/4	5 3/8	32	6 3/8	2 1/2	10

♦ Weight calculated with minimum "L" for standard thread.

* Based on the allowable stresses shown in the ASME Code for Pressure Piping.