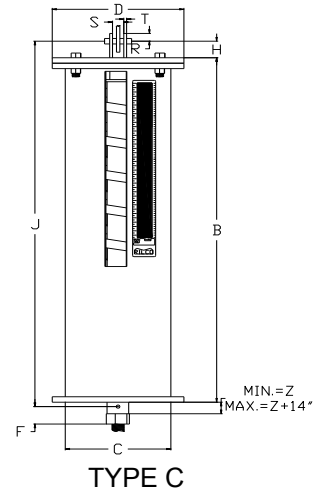
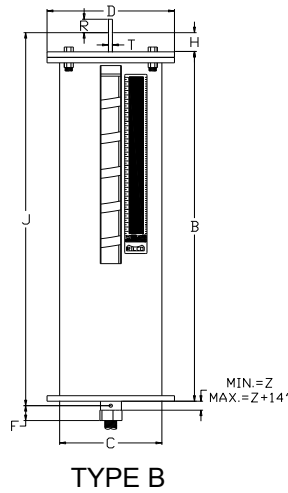
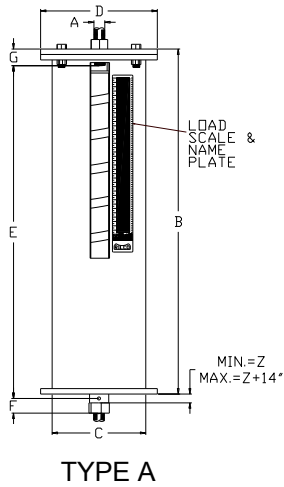


# Part # RVS-Quadruple Spring



RILCO "Variable Quadruple Spring Hanger" has all of the RVS-268 features of our RVS-268 and is designed to the same exacting specifications.

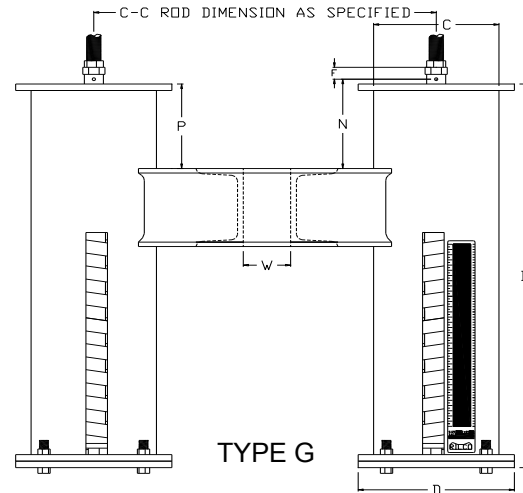
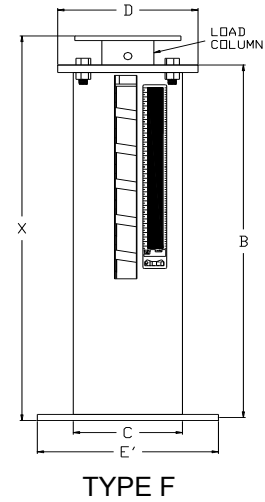
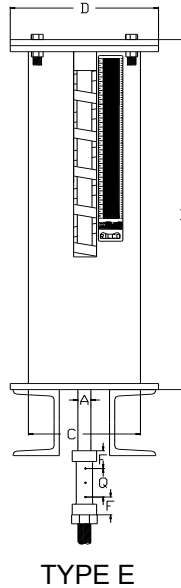
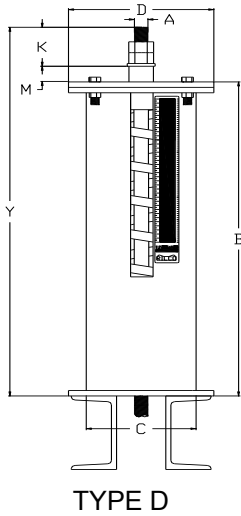
Each basic unit consists of four springs arranged in series within a single casing and a centering guide to assure the permanent alignment of the spring assembly.

This hanger is offered in the seven basic types as shown on this and the following page.

The Variable Selection Chart for sizing and instructions are found at the beginning of this section.

Weights (lbs) * Dimensions (inches)															
Hanger Size	Type F						Type G					Weight			
	E' Bottom Flange		Bottom Flange		Load Col. Dia.	Load Flange		Channel Size	Max C-C	Space Between Channels-W	Type				
	Size Sq.	Bolt Circle	Min	Max		Boilts	Thick				Dia.	Thick	A,B,C	D,E	F
0	7-1/2	7	8-3/4	5/8	1/4	1.90	3-7/8	3/16	C3 x 4.1	24	5/8	22	22	38	70
1	7-1/2	7	8-3/4	5/8	1/4	1.90	3-7/8	3/16	C3 x 4.1	24	5/8	26	26	40	78
2	7-1/2	7	8-3/4	5/8	1/4	1.90	3-7/8	3/16	C3 x 4.1	24	5/8	30	30	44	86
3	7-1/2	7-3/4	8-3/4	3/4	1/4	2.88	5-3/4	3/16	C3 x 4.1	30	3/4	40	38	66	102
4	7-1/2	7-3/4	8-3/4	3/4	1/4	2.88	5-3/4	3/16	C3 x 4.1	30	3/4	46	44	74	114
5	7-1/2	7-3/4	8-3/4	3/4	1/4	2.88	5-3/4	3/16	C3 x 4.1	30	3/4	50	48	78	122
6	9	8	10-7/8	3/4	3/8	3.50	6-3/8	1/4	C3 x 4.1	36	1	76	74	118	174
7	9	8	10-7/8	3/4	3/8	3.50	6-3/8	1/4	C3 x 4.1	36	1	92	90	138	206
8	9	8	10-7/8	3/4	3/8	3.50	6-3/8	1/4	C3 x 4.1	36	1	116	98	144	254
9	13-1/4	10-9/16	16-1/2	3/4	1/2	4.50	8-3/8	1/2	C4 x 5.4	36	1-1/4	174	168	252	374
10	13-1/4	10-9/16	16-1/2	3/4	1/2	4.50	8-3/8	1/2	C4 x 5.4	36	1-1/4	208	196	280	442
11	13-1/4	10-9/16	16-1/2	3/4	1/2	4.50	8-3/8	1/2	C4 x 5.4	36	1-1/4	176	170	248	378
12	13-1/4	10-9/16	16-1/2	3/4	1/2	4.50	8-3/8	1/2	C5 x 6.7	36	1-1/2	196	188	268	426
13	13-1/4	10-9/16	16-1/2	3/4	1/2	4.50	8-3/8	1/2	C5 x 6.7	36	1-1/2	268	258	342	570
14	13-1/4	10-9/16	16-1/2	3/4	1/2	4.50	8-3/8	1/2	C5 x 6.7	33	1-1/2	286	274	356	606
15	13-1/4	10-9/16	16-1/2	3/4	1/2	4.50	8-3/8	1/2	C6 x 10.5	36	1-1/2	316	398	374	684
16	13-1/4	10-9/16	16-1/2	3/4	1/2	2.00	8-3/8	1/2	C8 x 11.5	36	2-1/8	408	376	454	868
17	13-1/4	10-9/16	16-1/2	3/4	1/2	2.00	8-3/8	1/2	C8 x 11.5	36	2-1/8	518	466	546	1088
18	17-1/4	15-3/4	22	3/4	5/8	2.50	12-1/2	1/2	C12 x 20.7	42	2-3/8	964	894	1040	1992
19	17-1/4	15-3/4	22	3/4	5/8	2.50	12-1/2	1/2	C12 x 20.7	42	2-3/8	1140	1036	1188	2342
20	17-1/4	15-3/4	22	3/4	5/8	2.50	12-1/2	1/2	C12 x 20.7	40	2-3/8	1544	1386	1554	3140
21	17-1/4	15-3/4	22	3/4	5/8	3.00	12-1/2	1/2	C15 x 33.9	48	3-1/8	1820	1630	1684	3810
22	17-1/4	15-3/4	22	3/4	5/8	3.00	12-1/2	1/2	C15 x 33.9	48	3-3/8	2420	2220	2308	5012

### Part # RVS-Quadruple Spring



Weights (lbs) \* Dimensions (inches)

Hanger Size	Rod Size "A"	R.H. Thread Length	Casing		Min Thread Engage "F"	"Z"	Rod Take Out By Type					Type A	Type D		TYPE F		TYPE G
			Length "B"	Dia. "C"			A	B,C	D	E	G	Thread Depth "G"	"K"	"M"	Loaded Length Dim X		Rod Length "P"
							"E"	"J"	"Y"	"Q"	"N"	Min	Max				
0	1/2	16	25-1/8	4	15/16	15/16	25-1/8	26-5/8	37-1/8	15-1/8	1-1/2	7/16	1-1/4	7-3/4	26-5/8	28-7/8	1-1/2
1	1/2	16	28-5/8	4	15/16	11/16	28-5/8	30-1/8	40-5/8	15-1/8	1-1/2	7/16	1-1/4	7-3/4	30-1/8	32-3/8	1-1/2
2	1/2	16	31-5/8	4	15/16	1-1/16	31-5/8	33-1/8	43-5/8	15-1/8	1-1/2	7/16	1-1/4	7-3/4	33-1/8	35-3/8	1-1/2
3	1/2	16	27-7/8	5-9/16	15/16	9/16	27-7/8	29-3/8	39-7/8	15-1/8	2	7/16	1-1/4	7-3/4	30-3/16	32-9/16	2
4	1/2	16	30-3/8	5-9/16	15/16	1-3/16	30-3/8	31-7/8	42-3/8	15-1/8	2	7/16	1-1/4	7-3/4	31-11/16	33-7/8	2
5	1/2	16	33-1/8	5-9/16	15/16	1-1/16	33-1/8	34-5/8	45-1/8	15-1/8	2	7/16	1-1/4	7-3/4	34-7/16	36-11/16	2
6	5/8	16	32-15/16	6-5/8	15/16	13/16	32-15/16	34-7/16	45-1/8	15-1/8	2	5/8	1-1/2	7-11/16	34-1/2	36-9/16	2
7	5/8	16	36-7/8	6-5/8	15/16	1-1/16	36-7/8	38-3/8	49-1/16	15-1/8	2	5/8	1-1/2	7-11/16	38-1/4	40-9/16	2
8	5/8	16	38-11/16	6-5/8	15/16	13/16	38-11/16	40-3/16	50-7/8	15-1/8	2	5/8	1-1/2	7-11/16	39-1/2	41-11/16	2
9	3/4	16	38-13/16	8-5/8	1-1/4	1-1/8	38-13/16	40-5/16	51-1/8	15-1/2	3	1	1-3/4	7-9/16	39-5/8	41-11/16	3
10	3/4	16	43-3/4	8-5/8	1-1/4	1-3/8	43-3/4	45-1/4	56-1/16	15-1/2	3	1	1-3/4	7-9/16	44-3/8	47-1/16	3
11	3/4	17	35	8-5/8	1-1/4	1-3/16	35	36-1/2	47-5/16	15-1/2	3	1	2	7-9/16	35-5/8	38-11/16	3
12	1	17	37-1/2	8-5/8	1-1/4	7/8	37-1/2	39-1/2	50-5/16	15-1/2	3-7/8	1	2-1/4	7-9/16	38-7/8	41-1/4	4
13	1	17	47-3/4	8-5/8	1-1/4	1	47-3/4	49-3/4	60-9/16	15-1/2	3-7/8	1	2-1/2	7-9/16	48-7/8	51-7/16	4
14	1-1/4	17	48-3/8	8-5/8	1-1/4	3/4	48-3/8	51-1/4	61-15/16	15-1/2	3-7/8	1	2-1/2	7-9/16	50-7/8	52-15/16	4
15	1-1/4	18	48-1/8	8-5/8	1-1/4	3/4	48-1/8	51	61-15/16	15-1/2	4	1	3	7-9/16	47-3/4	49-15/16	4
16	1-1/2	18	57-7/8	8-5/8	1-15/16	2	57-7/8	60-7/8	71-7/16	15-1/16	4	1-3/8	3-1/2	7-1/16	57-3/4	60-9/16	4
17	1-3/4	19	66-1/8	8-5/8	1-15/16	2	66-1/8	69-1/8	80-3/16	15-9/16	4	1-3/8	4	7-1/16	65-1/2	68-1/4	4
18	2	19	64-1/8	12-3/4	2-3/4	2-1/2	64-1/8	68-1/8	78-11/16	14-7/8	4	2-1/4	4-9/16	7	63-5/8	65-11/16	4
19	2-1/4	20	73-1/8	12-3/4	2-3/4	2-9/16	73-1/8	77-5/8	88-1/8	15-7/16	4	2-1/4	5	7	71-1/8	73-5/16	4
20	2-1/2	20	86-1/8	12-3/4	2-3/4	2-11/16	86-1/8	90-5/8	101-11/16	15-15/16	4	2-1/4	5-9/16	7	86-5/8	88-5/8	4
21	2-3/4	21	95-7/8	12-3/4	3-5/8	2-3/4	95-7/8	99-3/8	113-7/16	15	4	2-3/4	6-1/4	9-5/16	94-9/16	98-11/16	4
22	3	21	120-1/8	12-3/4	3-5/8	2-3/4	120-1/8	124-1/8	138-7/16	15-1/2	4	3	6-5/8	9-5/16	118-11/16	122-15/16	4