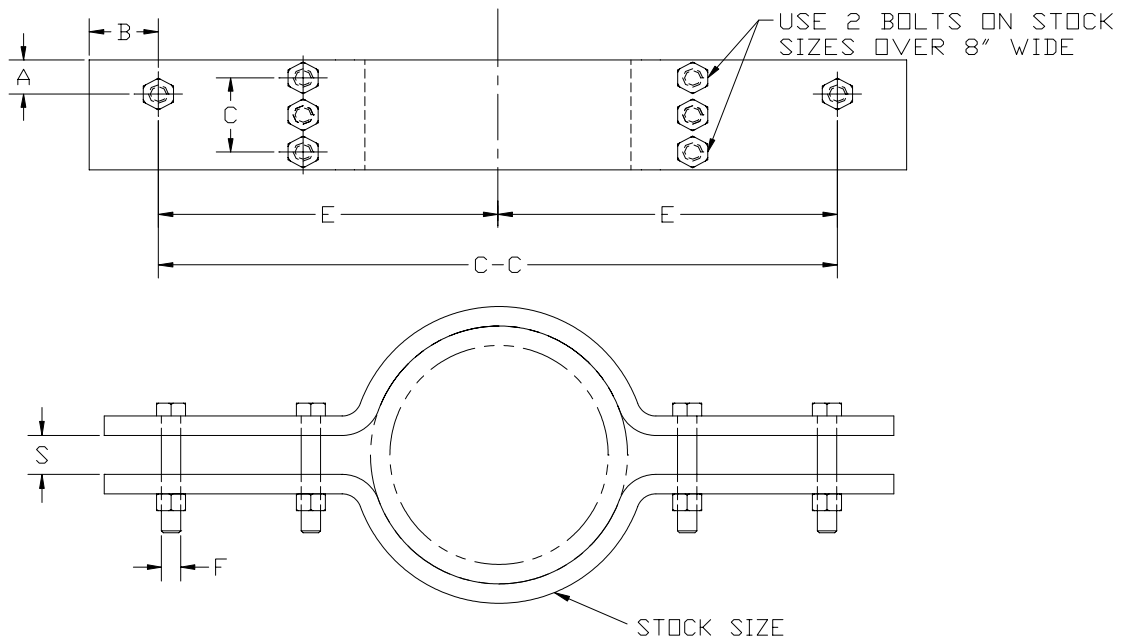


Riser Clamp – S.D.

Part # 362



MATERIAL TYPES: Carbon steel, chrome molybdenum or stainless steel.

FINISH: Black, Galvanized, or coated to customer specifications.

APPLICATIONS: Riser Clamps are used for the support of vertical piping. Load is carried by shear lugs which are welded to the pipe. (*Shear lugs not provided.*)

MAXIMUM TEMPERATURE: As required

ORDERING: Specify Part #362, material, exact pipe size, load, operating temperature, insulation thickness, C-C dimension, rod diameter and if connected to a spring or rigid connection.