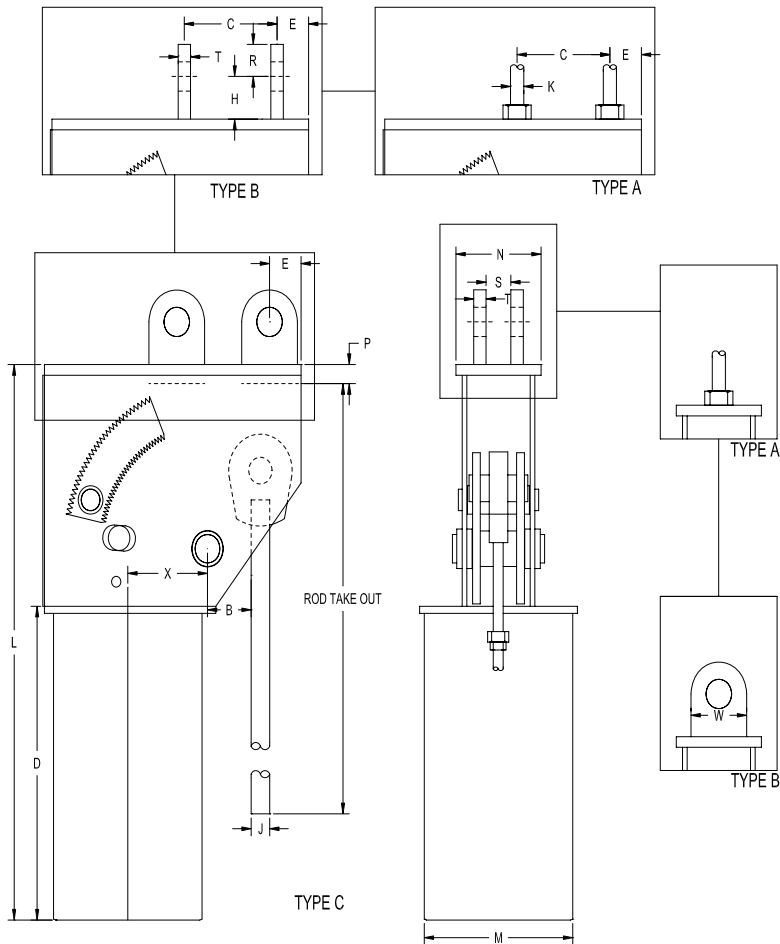


RCS-80V Type A, B and C



Hanger Sizes	L	C		D	E		H	M	N	P	X	Total Travel (in.)	Factors		A (max.)
		A & B	C		A & B	C							A	B & C	
84-94	78 3/4	16	15	49 3/4	4	4 1/2	6	24	10 1/2	3	12	≤ 9 1/2	45 3/4	54 3/4	3 3/4
												>10	55 1/2	64 1/2	
95-110	100	24	23	64	4	4 1/2	6	24	11 1/2	3 1/2	13 1/2	≤14	56 1/2	66	3 3/4
												>14 1/2	65 3/8	74 7/8	

Load (lbs)	14376 18300	18301 24700	24701 31000	31001 39000	39001 48000	48001 58000	58001 69000	69001 87500
A & K Rods	2	2 1/4	2 1/2	2 3/4	3	3 1/4*	3 1/2*	3 3/4*
K-Hole	2 3/8	2 5/8	2 7/8	3 1/8	3 3/8	3 5/8	3 7/8	4 1/8
R	3	3	4	4	4	4 1/2	4 1/2	4 1/2
S	2 7/8	3 1/8	3 3/8	3 5/8	3 7/8	4 1/8	4 3/8	4 5/8
T (Type B)	3/4	3/4	1	1	1	1	1 1/2	1 3/4
T (Type C)							1 1/4	1 1/4
W	6	6	8	8	8	9	9	1

* 3 1/4 and larger are furnished with 8 UN series thread