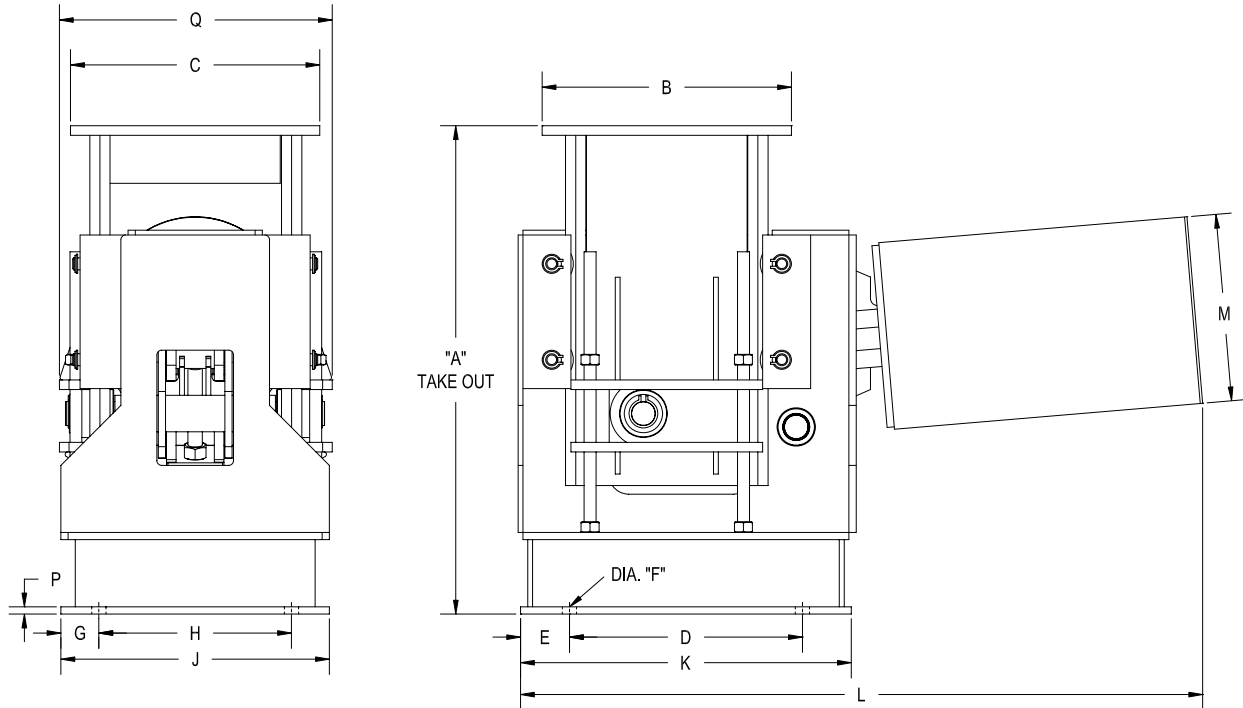


RCS-81H Type F Upthrust



The RCS-81H "TYPE F UPTHURST" is specifically designed to support pipes or equipment from below and is supplied with a base to anchor it to the floor. Available in most types of finishes.

Take-Out Factor "A"				
T.T.	Sizes			
	10 - 18	19 - 34	35 - 49	50 - 63
2	16 1/8	23 1/8	-	-
2.5			-	-
3			-	-
3.5			-	-
4	19 7/8	27 1/2	25 3/4	28 1/2
4.5				
5				
5.5				
6	-	-	31 5/8	34
6.5				
7				
7.5				
8	-	-	-	-
8.5				
9				
9.5				
10	-	-	-	-

*For down Travel: Take-Out = "A" + (1/2) Actual Travel
For Up Travel: Take-Out = "A" - (1/2) Actual Travel

Hanger Sizes	Total Travel TT	A	B	C	D	E	F	G	H	J	K	L	M	N	P	Q
10 - 18	2 - 6	See Take Out	10 7/8	11 7/8	9	2 1/2	3/4	2	8	12	14	22 7/16	8 1/4	5	1/2	13 7/8
19 - 34	2 - 8		13 3/4	13 3/4	13	2 1/8	3/4	2	10	14	17 1/4	31 5/8	12 1/2	8	5/8	16 3/8
35 - 49	2.5 - 10		17 7/8	16 1/4	17	2	7/8	2	13	17	21	38 1/4	13 5/8	8	3/4	19 3/4
50 - 63	3 - 10		21 5/8	19 1/4	16 1/2	4 5/8	7/8	3 5/8	11 3/4	19	25 3/4	52	17 3/8	10	3/4	23 1/4