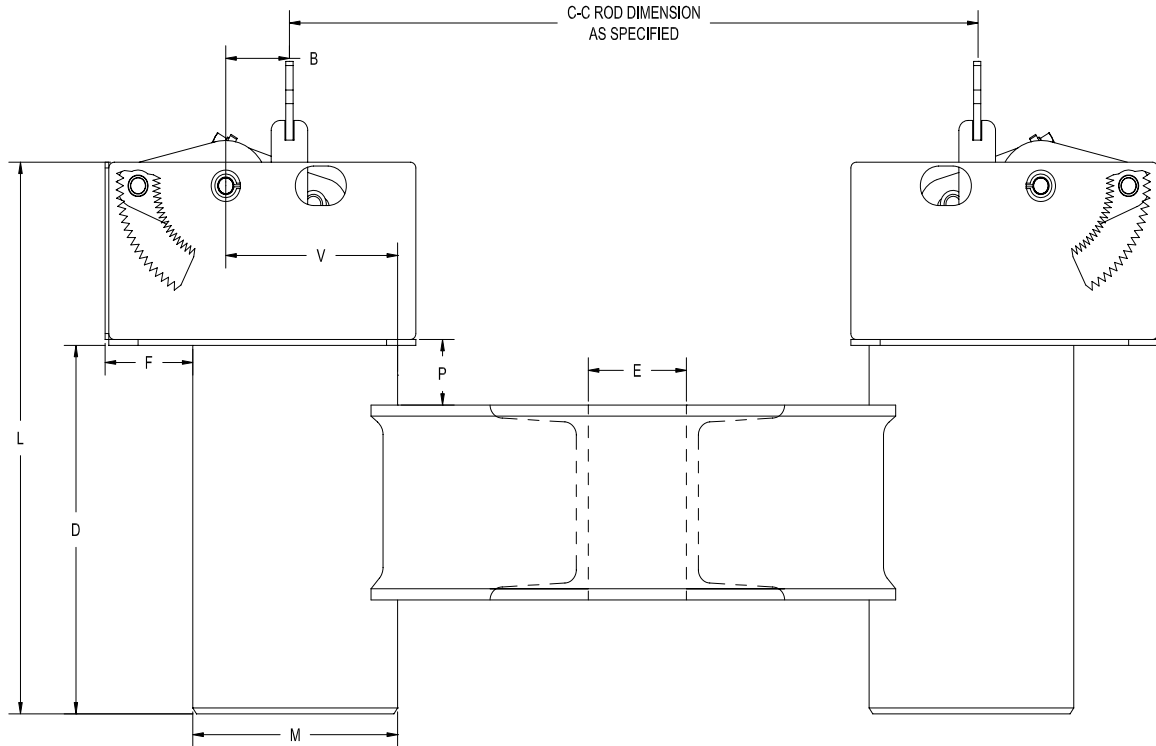


RCS-80V Type G


The RCS-80V "TYPE G" is manufactured using opposing constants and a pair of channels welded back to back, to form a trapeze assembly. This RILCO system is designed for use when a pipe is not to be centered on the constant support so that one spring of the trapeze carries a heavier load than the other. Available in most types of finishes.

Hanger Sizes	L	D	E	F	M	N	P	Q	V	Y	Channel	C-C	Total Travel (in.)	Factors	A (max.)
10-18	18 7/8	8 7/8	1	2	8 5/8	6 7/8	2 9/16	3 1/2	5 13/16	4	4 @ 5.4	30	≤ 5	11 11/16	3/4
													>5 1/2	14	
19-34	28 1/2	16	1 1/4	2 1/8	12 3/4	8 9/16	3 9/16	4	9	6 1/8	6 @ 10.5	42	≤ 5	16 13/16	1 1/4
													>5 1/2	18 3/4	
35-49	32 3/4	18 1/4	1 1/2	4 3/4	14	9 13/16	3 7/16	5 1/2	10 3/4	8	10 @ 15.3	48	≤ 6	19 1/4	1 3/4
													>6 1/2	23 7/8	
50-63	46 7/8	28 1/8	2 1/8	8 5/16	18	11 1/4	4	6 1/2	14 3/4	10 15/16	12 @ 20.7	48	≤ 11	24 5/8	2 1/4
													>11 1/2	30	
64-110	Not Available														

A-Rod Selection Chart

Loads (lbs)	0 800	801 1500	1501 2540	2541 4000	4001 6100	6101 9400	9401 13400	13401 18300	18301 24700
A Rod Size	1/2	5/8	3/4	1	1 1/4	1 1/2	1 3/4	2	2 1/4