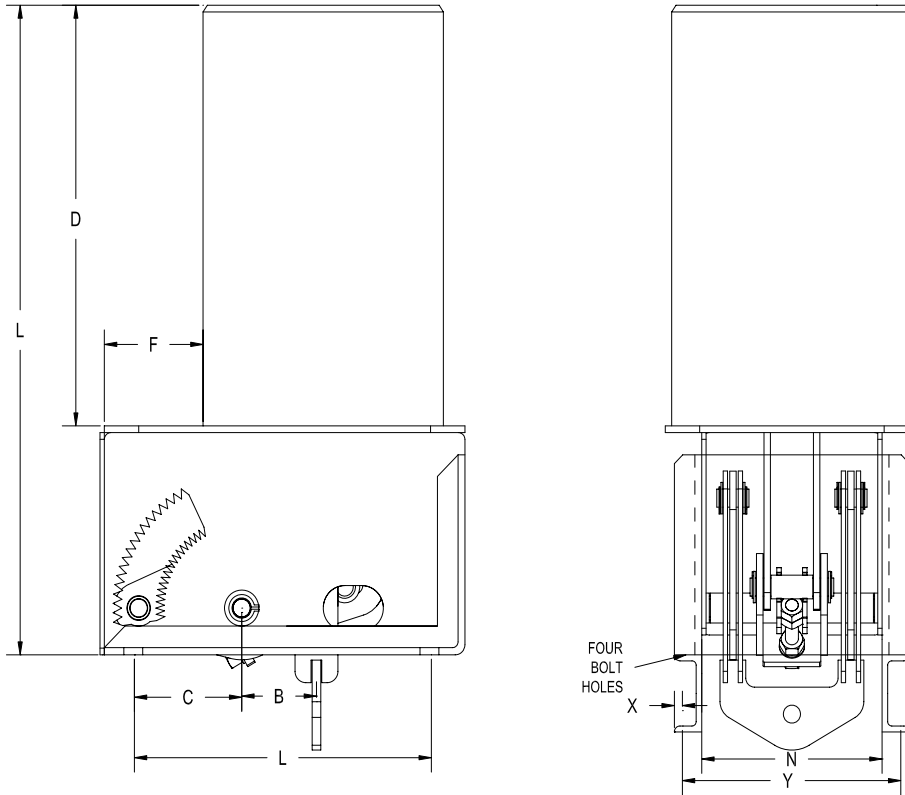


RCS-80V Type E



The RCS-80V "TYPE E" is the same as the RCS 80-V "TYPE D" except the "TYPE E" is designed with two(2) brackets that comprise its frame thereby allowing it to rest on the top flange of the structural member. Available in most types of finishes.

Hanger Sizes	L	C	D	F		I	L	M	X	Y	N	Q	Angle Size	Total Travel (in.)	Factors	A (max.)
10-18	18 7/8	1 1/2	8 7/8	2		-	4 5/16	8 5/8	5/8	8 15/16	6 7/16	1 3/8	1.5 x 1.5 x 1/4	≤ 5 >5 1/2	1 7/16 3 3/4	3/4
19-34	28 1/2	13/16	16	2 1/8		-	6 11/16	12 3/4	5/8	11 3/16	8 9/16	1 5/8	1.5 x 1.5 x 1/4	≤ 5 >5 1/2	2 13/16 4 15/16	1 1/4
35-49	32 3/4	1 7/8	18 1/4	4 3/4		-	8 5/16	14	13/16	13 5/16	9 13/16	2 1/2	2 x 2 x 3/8	≤ 6 >6 1/2	2 1/2 7 1/8	1 3/4
50-63	46 7/8	3 3/4	28 1/8	8 5/16		-	12 13/16	18	1 5/16	14 11/16	11 1/4	3	3 x 3 x 3/8	≤ 11 >11 1/2	1 5/8 7	2 1/4
64-74	62	3/8	35 3/4	3/8		25 3/8	15 3/4	22 3/16	1 9/16	14 15/16	11	3	3.5 x 3.5 x 1/2	≤10 1/2 > 11	9 1/8 9 1/4	2 3/4
75-83	62 1/2	5 1/4	35 3/4	1 1/2		25 3/8	25 5/8	27 3/16	1 3/4	15 1/2	11	3	4 x 4 x 3/8	≤10 1/2 > 11	8 3/4 8 7/8	3 1/4
84-110	Not Available															

A-Rod Selection Chart

Loads (lbs)	0 800	801 1500	1501 2540	2541 4000	4001 6100	6101 9400	9401 13400	13401 18300	18301 24700	24701 31000	31001 39000	39001 48000	48001 58000
A Rod Size	1/2	5/8	3/4	1	1 1/4	1 1/2	1 3/4	2	2 1/4	2 1/2	2 3/4	3	3 1/4

* 3 3/4" is furnished with 8 UN series thread.