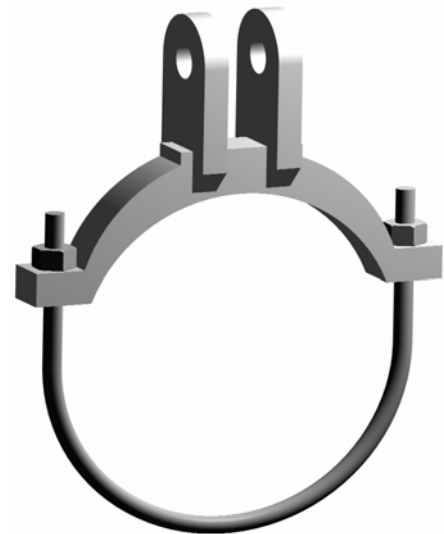
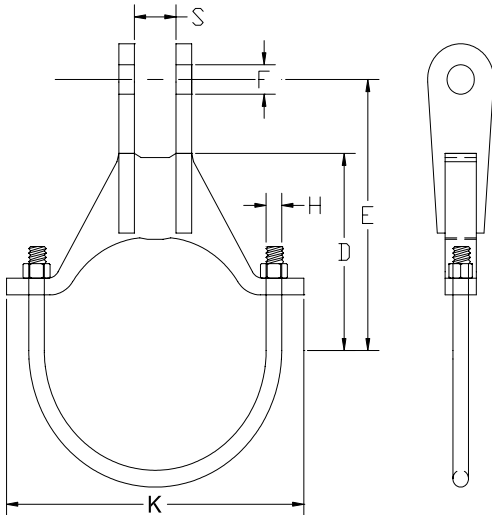


Alloy Steel Pipe Clamp

Part # 320



SIZE RANGE: 4" to 16" inches.

MATERIAL TYPES: Chrome molybdenum steel except U-bolt which is stainless steel.

FINISH: Black, Galvanized, or coated to customer specifications.

APPLICATIONS: Recommended for suspension high temperature pipe requiring up to 4" inches of insulation.

APPROVALS: Complies with Manufacturers Standardization Society SP-69 (Type 2)

MAXIMUM TEMPERATURE: 1050°F (565°C)

ORDERING: Specify pipe size, part number, name and finish.

Load (lbs) • Weight (lbs) • Dimensions (inches)

Pipe Size	*Maximum Load				Weight	D	Rod Take Out E	F	H	K	S
	750° F	950° F	1000° F	1050° F							
4	3780	3300	2770	1890	4.0	3 7/8	6 3/4	7/8	1/2	6 1/2	1 1/16
6	6060	5290	4440	3030	7.5	5 7/16	8 5/16	1	5/8	9 1/8	1 7/16
8	6060	5290	4440	3030	9.0	6 11/16	9 9/16	1	5/8	11 1/8	1 7/16
10	9060	7910	6640	4420	15.8	8 3/8	10 7/8	1 1/8	3/4	13 5/8	1 7/16
12	12570	10980	9015	6010	24.3	10 1/8	12 7/8	1 1/2	7/8	16 1/8	1 15/16
14	12570	10980	9015	6010	26.3	11 1/8	13 7/8	1 1/2	7/8	17 3/8	1 15/16
16	12570	10980	9015	6010	31.0	12 1/4	15	1 1/2	7/8	19 5/8	1 15/16

* Based on Allowable stresses shown in the ASME Code for Pressure Piping