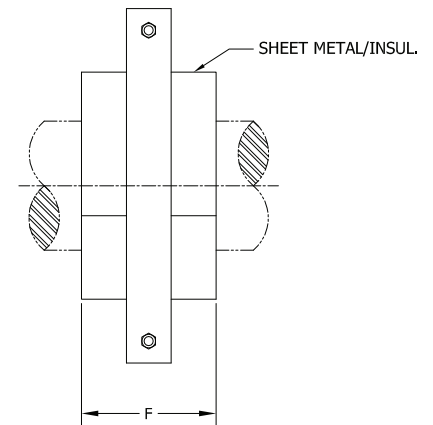
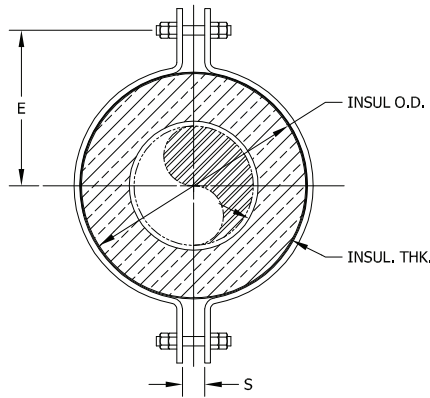
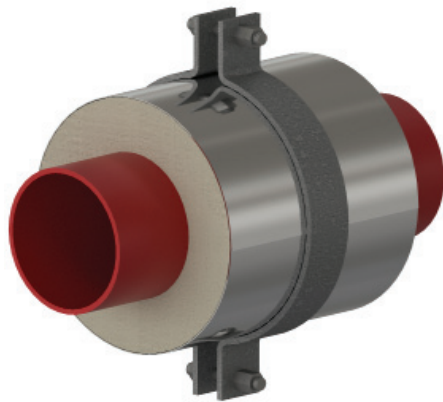


# HHCS - 6 x 1.5 - 6 - 2705

NEW DESIGNATION  
EXAMPLE

LEGACY DESIGNATION **HH-3100**

Model No.    Nominal Pipe Size    Insulation Thickness    F (in)    Vertical Load



PIPE SIZE	VERT LOAD (Lbs)	INSULATION THICKNESS																							
		1"				1-1/2"				2"				2-1/2"				3"							
		F (in)	INSUL OD (in)	E (in)	S (in)	F (in)	INSUL OD (in)	E (in)	S (in)	F (in)	INSUL OD (in)	E (in)	S (in)	F (in)	INSUL OD (in)	E (in)	S (in)	F (in)	INSUL OD (in)	E (in)	S (in)				
1"	515	6	3.5	3.125	0.875	6	4.5	3.75	0.875	6	5.563	4.25	0.875	6	6.625	4.75	0.875	6	6.625	5.25	0.875	6	7.625	5.25	0.875
1-1/2"	605	6	4	3.375	0.875	6	5	4	0.875	6	6.625	4.75	0.875	6	7.625	5.25	0.875	6	8.625	5.875	0.875	6	8.625	5.875	0.875
2"	650	6	4.5	3.75	0.875	6	5.563	4.25	0.875	6	6.625	4.75	0.875	6	7.625	5.25	0.875	6	8.625	5.875	0.875	6	8.625	5.875	0.875
2-1/2"	820	6	5	4.125	0.875	6	6.625	5.125	0.875	6	7.625	5.625	0.875	6	8.625	6.125	0.875	6	9.625	6.625	0.875	6	9.625	6.625	0.875
3"	1125	6	5.563	4.5	0.875	6	6.625	5.125	0.875	6	7.625	5.75	0.875	6	8.625	6.25	0.875	6	9.625	6.75	0.875	6	9.625	6.75	0.875
4"	1725	6	6.625	5.125	0.875	6	7.625	5.75	0.875	6	8.625	6.25	0.875	6	9.625	6.75	0.875	6	10.75	7.375	0.875	6	10.75	7.375	0.875
6"	2705	6	8.625	6.25	0.875	6	9.625	6.75	0.875	6	10.75	7.375	0.875	6	11.75	7.875	0.875	6	12.75	8.375	0.875	6	12.75	8.375	0.875
8"	3650	6	10.75	7.75	1.25	6	11.75	8.25	1.25	6	12.75	8.75	1.25	6	14	10.25	1.25	6	15	10.75	1.25	6	15	10.75	1.25
10"	3655	6	12.75	8.75	1.25	6	14	10.25	1.25	6	15	10.75	1.25	6	16	11.38	1.25	6	17	11.875	1.25	6	17	11.875	1.25
12"	4640	6	15	10.75	1.25	6	16	11.38	1.25	6	17	11.88	1.25	6	18	12.38	1.25	6	19	12.875	1.25	6	19	12.875	1.25
14"	4640	6	16	11.375	1.25	6	17	11.88	1.25	6	18	12.38	1.25	6	19	12.88	1.25	6	20	13.375	1.25	6	20	13.375	1.25
16"	6825	6	18	13	1.75	9	19	13.5	1.75	9	20	14	1.75	9	21	14.5	1.75	9	22	15	1.75	9	22	15	1.75
18"	6825	6	20	14	1.75	9	21	14.5	1.75	9	22	15	1.75	9	23	15.5	1.75	9	24	16	1.75	9	24	16	1.75
20"	7970	6	22	15	1.75	9	23	15.5	1.75	9	24	16	1.75	9	25	16.63	1.75	9	26	17.125	1.75	9	26	17.125	1.75
24"	10290	6	26	17.875	1.75	9	27	18.38	1.75	9	28	18.88	1.75	9	29	19.38	1.75	9	30	20	1.75	9	30	20	1.75
30"	10605	9	32	21	1.75	12	33	21.5	1.75	12	34	22	1.75	12	35	22.5	1.75	12	36	23	1.75	12	36	23	1.75
36"	13025	12	38	24.375	2.625	12	39	24.88	2.625	12	40	25.38	2.625	12	41	25.88	2.625	12	42	26.375	2.625	12	42	26.375	2.625
42"	13025	12	44	24.375	2.625	12	45	28	2.625	12	46	29.25	2.625	12	47	29.75	2.625	12	48	30.25	2.625	12	48	30.25	2.625

### Applications & Features:

- Insulated Pipe Support with a Heavy Duty 2-Bolt Pipe Clamp
- For use with standard pipe hanger hardware
- Temperature range to 1200 Deg F
- Higher temperature applications available
- Support and insulate steam, hot water, chilled water, gas and HVAC lines
- Low installation costs
- A-36 clamp available in galvanized or painted finishes
- Water-resistant calcium silicate
- Galvanized steel jacket
- Support constructed in accordance with MSS-SP58
- A307 or A193 B7 Plated bolts/studs
- For special applications or for information on other insulation thicknesses or pipe sizes, please contact us.

### Ordering Instructions:

To Order, Please Specify:

- Model Number
- Nominal Pipe Size
- Insulation Thickness
- Vertical Load
- Operating Temperature

\* See last page of this document for new designation model number construction

\*\* Information presented on this page subject to change without notice.

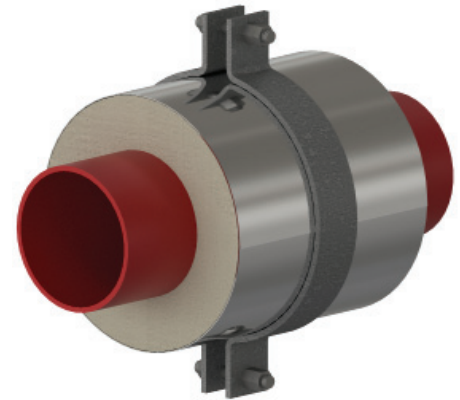
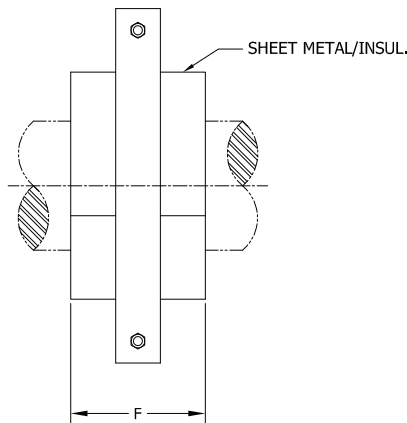
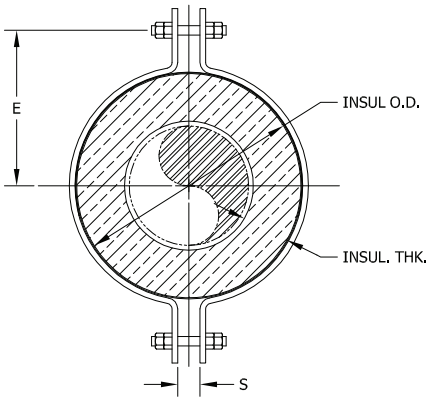


# HHCS - 6 x 1.5 - 6 - 2705

NEW DESIGNATION  
EXAMPLE

LEGACY DESIGNATION HH-3100

Model No.    Nominal Pipe Size    Insulation Thickness    F (in)    Vertical Load



PIPE SIZE	VERT LOAD (Lbs)	INSULATION THICKNESS																							
		3-1/2"				4"				4-1/2"				5"				5-1/2"							
		F (in)	INSUL OD (in)	E (in)	S (in)	F (in)	INSUL OD (in)	E (in)	S (in)	F (in)	INSUL OD (in)	E (in)	S (in)	F (in)	INSUL OD (in)	E (in)	S (in)	F (in)	INSUL OD (in)	E (in)	S (in)				
1"	515	6	8.625	5.875	0.875	6	9.625	6.375	0.875	6	10.75	6.875	0.875	6	11.75	7.375	0.875	6	12.75	7.875	0.875	6	13.75	8.375	0.875
1-1/2"	605	6	9.625	6.375	0.875	6	10.75	6.875	0.875	6	11.75	7.375	0.875	6	12.75	7.875	0.875	6	13.75	8.375	0.875	6	14.75	8.875	0.875
2"	650	6	9.625	6.375	0.875	6	10.75	6.875	0.875	6	11.75	7.375	0.875	6	12.75	7.875	0.875	6	13.75	8.375	0.875	6	14.75	8.875	0.875
2-1/2"	820	6	10.75	7.25	0.875	6	11.75	7.75	0.875	6	12.75	8.25	0.875	6	13.75	8.75	0.875	6	14.75	9.25	0.875	6	15.75	9.75	0.875
3"	1125	6	10.75	7.25	0.875	6	11.75	7.75	0.875	6	12.75	8.25	0.875	6	13.75	8.75	0.875	6	14.75	9.25	0.875	6	15.75	9.75	0.875
4"	1725	6	11.75	7.875	0.875	6	12.75	8.375	0.875	6	13.75	8.875	0.875	6	14.75	9.375	0.875	6	15.75	9.875	0.875	6	16.75	10.375	0.875
6"	2705	6	14	9.125	0.875	6	15	9.75	0.875	6	16	10.25	0.875	6	17	10.75	0.875	6	18	11.25	0.875	6	19	11.75	0.875
8"	3650	6	16	11.375	1.25	6	17	11.88	1.25	6	18	12.38	1.25	6	19	12.88	1.25	6	20	13.38	1.25	6	21	13.88	1.25
10"	3655	6	18	12.375	1.25	6	19	12.88	1.25	6	20	13.38	1.25	6	21	13.88	1.25	6	22	14.38	1.25	6	23	14.88	1.25
12"	4640	6	20	13.375	1.25	6	21	13.88	1.25	6	22	14.38	1.25	6	23	14.88	1.25	6	24	15.38	1.25	6	25	15.88	1.25
14"	4640	6	21	13.875	1.25	6	22	14.38	1.25	6	23	14.88	1.25	6	24	15.38	1.25	6	25	15.88	1.25	6	26	16.38	1.25
16"	6825	9	23	15.5	1.75	9	24	16	1.75	9	25	16.63	1.75	9	26	17.13	1.75	9	27	17.63	1.75	9	28	18.13	1.75
18"	6825	9	25	16.625	1.75	9	26	17.13	1.75	9	27	17.63	1.75	9	28	18.13	1.75	9	29	18.63	1.75	9	30	19.13	1.75
20"	7970	9	27	17.625	1.75	9	28	18.13	1.75	9	29	18.63	1.75	9	30	19.13	1.75	9	31	19.63	1.75	9	32	20.13	1.75
24"	10290	9	31	20.5	1.75	9	32	21	1.75	12	33	21.5	1.75	12	34	22	1.75	12	35	22.5	1.75	12	36	23	1.75
30"	10605	12	37	23.5	1.75	12	38	24	1.75	12	39	24.5	1.75	12	40	25	1.75	12	41	25.5	1.75	12	42	26	1.75
36"	13025	12	43	27	2.625	12	44	27.5	2.625	12	45	28	2.625	12	46	28.5	2.625	12	47	29	2.625	12	48	29.5	2.625
42"	13025	12	49	30.75	2.625	12	50	31.25	2.625	12	51	31.75	2.625	12	52	32.25	2.625	12	53	32.75	2.625	12	54	33.25	2.625

### Applications & Features:

- Insulated Pipe Support with a Heavy Duty 2-Bolt Pipe Clamp
- For use with standard pipe hanger hardware
- Temperature range to 1200 Deg F
- Higher temperature applications available
- Support and insulate steam, hot water, chilled water, gas and HVAC lines
- Low installation costs
- A-36 clamp available in galvanized or painted finishes
- Water-resistant calcium silicate
- Galvanized steel jacket
- Support constructed in accordance with MSS-SP58
- A307 or A193 B7 Plated bolts/studs
- For special applications or for information on other insulation thicknesses or pipe sizes, please contact us.

### Ordering Instructions:

To Order, Please Specify:

- Model Number
- Nominal Pipe Size
- Insulation Thickness
- Vertical Load
- Operating Temperature

\* See last page of this document for new designation model number construction

\*\* Information presented on this page subject to change without notice.



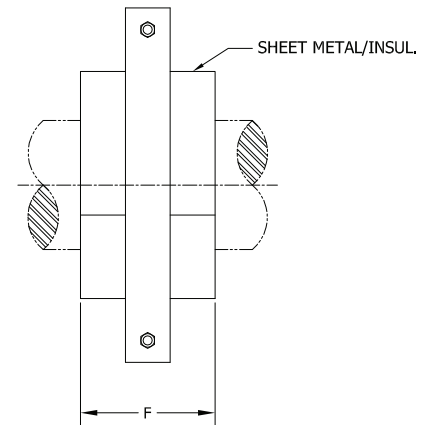
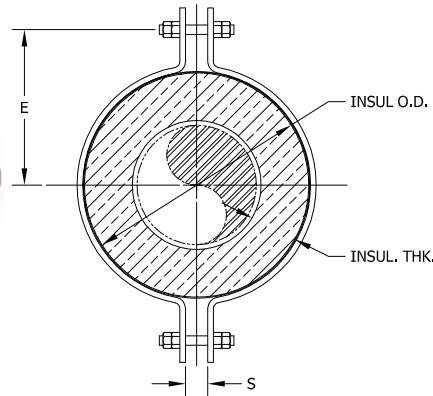
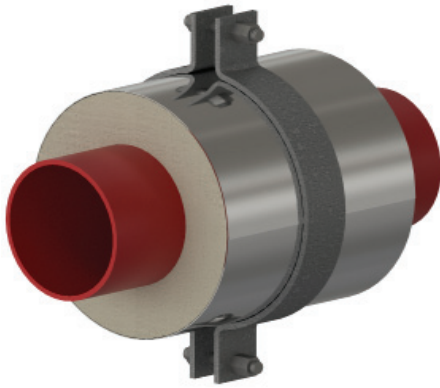
www.rilco.com

# HHCS - 6 x 1.5 - 6 - 2705

NEW DESIGNATION  
EXAMPLE

LEGACY DESIGNATION **HH-3100**

Model No.    Nominal Pipe Size    Insulation Thickness    F (in)    Vertical Load



PIPE SIZE	VERT LOAD (Lbs)	INSULATION THICKNESS																			
		6"				6-1/2"				7"				7-1/2"				8"			
		F (in)	INSUL OD (in)	E (in)	S (in)	F (in)	INSUL OD (in)	E (in)	S (in)	F (in)	INSUL OD (in)	E (in)	S (in)	F (in)	INSUL OD (in)	E (in)	S (in)	F (in)	INSUL OD (in)	E (in)	S (in)
1"	515	6	14	8.5	0.875	6	15	9	0.875	6	16	9.5	0.875	6	17	10.13	0.875	6	18	10.625	0.875
1-1/2"	605	6	15	9	0.875	6	16	9.5	0.875	6	17	10.25	0.875	6	18	10.75	0.875	6	19	11.25	0.875
2"	650	6	15	9	0.875	6	16	9.5	0.875	6	17	10.25	0.875	6	18	10.75	0.875	6	19	11.25	0.875
2-1/2"	820	6	16	10.25	0.875	6	17	10.75	0.875	6	18	11.25	0.875	6	19	11.75	0.875	6	20	12.25	0.875
3"	1125	6	16	10.25	0.875	6	17	10.75	0.875	6	18	11.25	0.875	6	19	11.75	0.875	6	20	12.25	0.875
4"	1725	6	17	10.75	0.875	6	18	11.25	0.875	6	19	11.75	0.875	6	20	12.25	0.875	6	21	13.75	0.875
6"	2705	6	19	11.75	0.875	6	20	12.25	0.875	6	21	13.75	0.875	6	22	14.25	0.875	6	23	14.75	0.875
8"	3650	6	21	13.875	1.25	6	22	14.38	1.25	6	23	14.88	1.25	6	24	15.5	1.25	6	25	16	1.25
10"	3655	6	23	14.875	1.25	6	24	15.5	1.25	6	25	16	1.25	6	26	16.5	1.25	6	27	17.375	1.25
12"	4640	6	25	16	1.25	6	26	16.5	1.25	6	27	17.38	1.25	6	28	17.88	1.25	6	29	18.375	1.25
14"	4640	6	26	16.5	1.25	6	27	17.38	1.25	6	28	17.88	1.25	6	29	18.38	1.25	6	30	18.875	1.25
16"	6825	9	28	18.125	1.75	9	29	18.63	1.75	9	30	19.13	1.75	9	31	19.63	1.75	9	32	20.125	1.75
18"	6825	9	30	19.125	1.75	9	31	19.63	1.75	9	32	20.13	1.75	9	33	21.38	1.75	9	34	21.875	1.75
20"	7970	9	32	20.125	1.75	9	33	21.38	1.75	9	34	21.88	1.75	9	35	22.38	1.75	9	36	22.875	1.75
24"	10290	12	36	23	1.75	12	37	23.5	1.75	12	38	24	1.75	12	39	24.5	1.75	12	40	25	1.75
30"	10605	12	42	26.125	1.75	12	43	26.63	1.75	12	44	27.13	1.75	12	45	27.63	1.75	12	46	28.125	1.75
36"	13025	12	48	30.25	2.625	12	49	30.75	2.625	12	50	31.25	2.625	12	51	31.75	2.625	12	52	32.25	2.625
42"	13025	12	54	33.25	2.625	12	55	33.75	2.625	12	56	34.25	2.625	12	57	34.75	2.75	12	58	35.25	2.625

### Applications & Features:

- Insulated Pipe Support with a Heavy Duty 2-Bolt Pipe Clamp
- For use with standard pipe hanger hardware
- Temperature range to 1200 Deg F
- Higher temperature applications available
- Support and insulate steam, hot water, chilled water, gas and HVAC lines
- Low installation costs
- A-36 clamp available in galvanized or painted finishes
- Water-resistant calcium silicate
- Galvanized steel jacket
- Support constructed in accordance with MSS-SP58
- A307 or A193 B7 Plated bolts/studs
- For special applications or for information on other insulation thicknesses or pipe sizes, please contact us.

### Ordering Instructions:

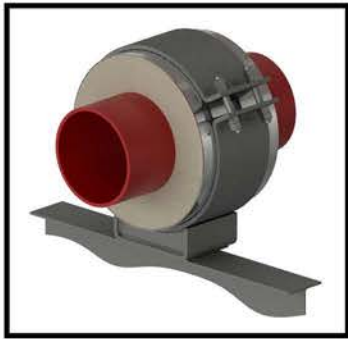
To Order, Please Specify:

- Model Number
- Nominal Pipe Size
- Insulation Thickness
- Vertical Load
- Operating Temperature

\* See last page of this document for new designation model number construction

\*\* Information presented on this page subject to change without notice.





# HSCS - 6x3-4-18-3500-1200-2000

## TEMPERATURE CLASSIFICATION

**HOT (H)** - (typical range 0°F to 1200°F)

**COLD (C)** - (typical range -450°F to 200°F)

**DUAL TEMP (D)** - (typical range -450°F to 1200°F)

## FUNCTION

**SLIDE (S)** (for vertically restrained pipe)  
i.e. HSPW-3x1.5-4-12-2100

**GUIDE (G)** (for vertically and laterally restrained pipe)  
i.e. HGPW-6x1.5-4-6-1275-450

- **GUIDE (L)** (for vertically and laterally restrained pipe, allows uplift of piping)  
i.e. HG(L)PW-1x1.5-4-6-225-80

- **GUIDE (M)** (for vertically and laterally restrained pipe, guided at cradle)  
i.e. HG(M)PW-1x1.5-4-6-225-80

**ANCHOR (A)** (for vertically, laterally and axially restrained pipe)  
i.e. HAPW-4x1.5-4-6-840-295-1730

**HANGING (H)** (for vertically restrained pipe)  
i.e. HHPW-3x1.5-4-12-2100

**RISER (V)** (for vertically restrained pipe)  
i.e. HVPW-3x1.5-4-12-2100

**FLAT (F)** (for vertically restrained pipe)  
i.e. HFPW-3x1.5-4-12-2100

**ROLLER (R)** (for vertically restrained pipe)  
i.e. HRPW-3x1.5-4-12-2100

## INSULATION TYPE

Calcium Silicate (CS)

PyroWrap (PW) (Aspen Aerogels Pyrogel® XT-E)

Polyurethane Foam (PF)

FOAMGLAS® (FG)

CryoWrap (CW) (Aspen Aerogels Cryogel® Z)

AXIAL LOAD (lbs)

LATERAL LOAD (lbs)

VERTICAL LOAD (lbs)

STEEL LENGTH (in)

BOP (in)

INSULATION THICKNESS (in)

PIPE SIZE (in)